

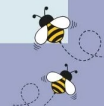
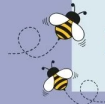
## PEAKS' POSTINGS



Beloved  
Community

Equipping  
the Saints

Expanding  
the  
Kingdom



### Weekly Calendar

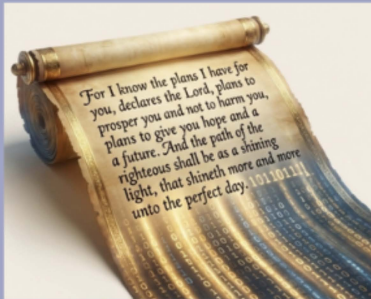
1/20	1:00pm	Church Partnership Commission
1/21	9:30am	Commission on Examinations
1/21	2:00pm	Constitutional Ministries
1/22	10:00am	Cabinet--In-person



## OUR PURPOSE

Presbytery is the tie that binds our diverse contexts to share God's love by: supporting, connecting, guiding equipping and resourcing ministries.

Beloved Community • Equipping the Saints • Expanding the Kingdom



**January 29, 2026  
2-3:30pm on Zoom**

**Register**

## **AI (Artificial Intelligence) in Ministry**

Learn about how AI works and how it can work for your ministry. This practical, hands-on session covers prompt engineering basics, automating meeting minutes, Sunday prep, admin, and creating outreach materials with AI-powered design tools. We'll also have a chance to discuss important ethical considerations raised by AI. Presented by the Stated Clerk.

## Community Worship

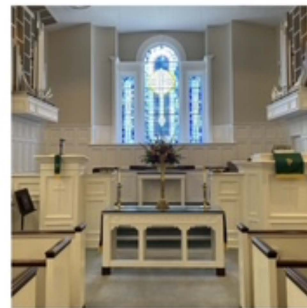
*Join us for a Worship  
Service of Gratitude &  
Farewell*

**11 A.M.  
SUNDAY,  
FEBRUARY 1**

**FOREST HILLS  
PRESBYTERIAN  
CHURCH**

**725 BEECHNUT LANE,  
MARTINSVILLE, VA**

Join us as we celebrate Rev. Cheryl  
Peeples' retirement and Forest Hills  
Presbyterian Church's final worship service.  
With gratitude for God's faithfulness, we  
go forward together, following Christ's call  
into new places and ministries.  
A reception in the Fellowship Hall will  
follow the service.



# February 1 Grant Deadlines



<b>Church Partnership</b>	Grants to be used for partnership with other congregations and expanded ministry opportunities. \$500-\$5,000
<b>Community Outreach</b>	Grants for local community organizations recommended by a Peaks' session for community care programs. Maximum \$2,000.
<b>Curriculum</b>	Grants for churches towards purchase of curriculum, to be shared with other Peaks churches after use. Up to \$500.
<b>Earth Care</b>	Grants to support congregations in creation care or earth care ministry in worship, educational activities, outreach, or facilities. \$200-\$400
<b>Justice and Mercy</b>	Grants to support new and innovative projects that advance justice and mercy ministries which fulfill God's mission in the world. \$500-\$2,500.



Click for information and applications or  
[peakspresbytery.org/grants/](https://peakspresbytery.org/grants/)

PDF Version of Postings

Submit an Item for Postings

The normal deadline for Postings items is noon on Monday for the Tuesday edition. JPEG and PNG image files preferred. Send text and images in separate files where possible. All submissions subject to editing. Submission does not guarantee publication.

---

**Presbytery of the Peaks**

PO Box 2519  
1195 Carters Stable Road  
Forest, Virginia 24551  
United States of America

You received this email because you signed up on our website or made a purchase from us.

[Unsubscribe](#)

